

2022 New Mexico Wildfires and Post-fire Floods

USACE Albuquerque
MAJ Brett Fuller
CPT Robert Zebrowski



US Army Corps
of Engineers®



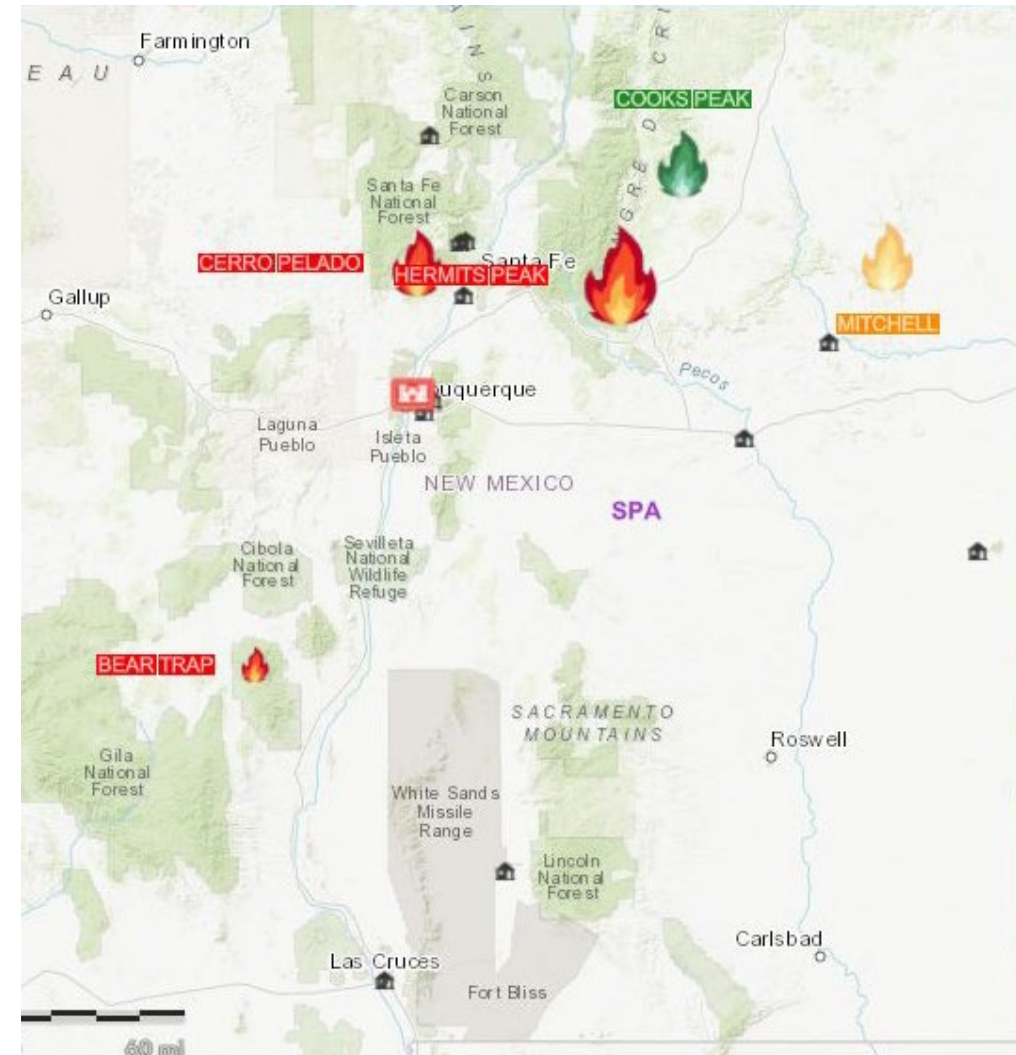
NM WILDFIRE SITUATION 12 MAY 2022

FIRE NAME	START DATE	COUNTY	ACRES	PERCENT CONTAINED	STRUCTURES DESTROYED	CRITICAL STRUCTURES THREATENED	DEATHS
HERMITS PEAK	06-APR-22	San Miguel, Mora, Taos	259,810	29	396	Fire w/in 1 mile of 3 transmission lines that serve Las Vegas, NM	0
CERRO PELADO	22-APR-22	Sandoval	43,376	11	10	Fire w/in 10 miles of Cochiti Lake Project	0
BEAR TRAP	01-MAY-22	Socorro	7,552	5	No data		0
MITCHELL	22-APR-22	Harding	25,000	65	0		0
COOKS PEAK	17-APR-22	Mora, Colfax	59,359	97	4		0

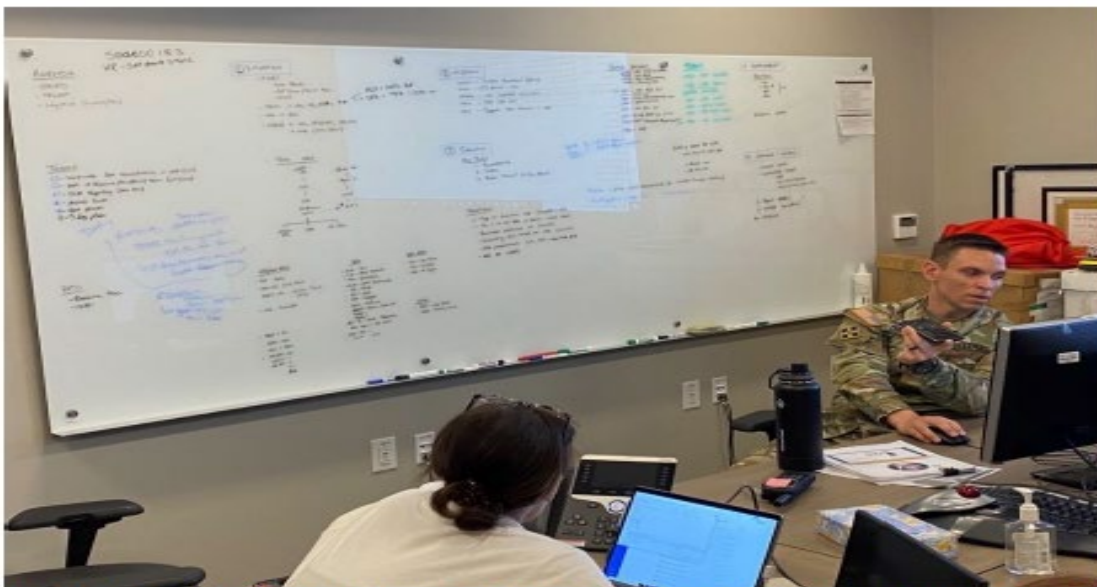
0% - 34% contained
35% - 74% contained
75% - 100% contained

Fire data from Integrated Reporting of Wildland Fire Information (IRWIN) via SPD UCOP

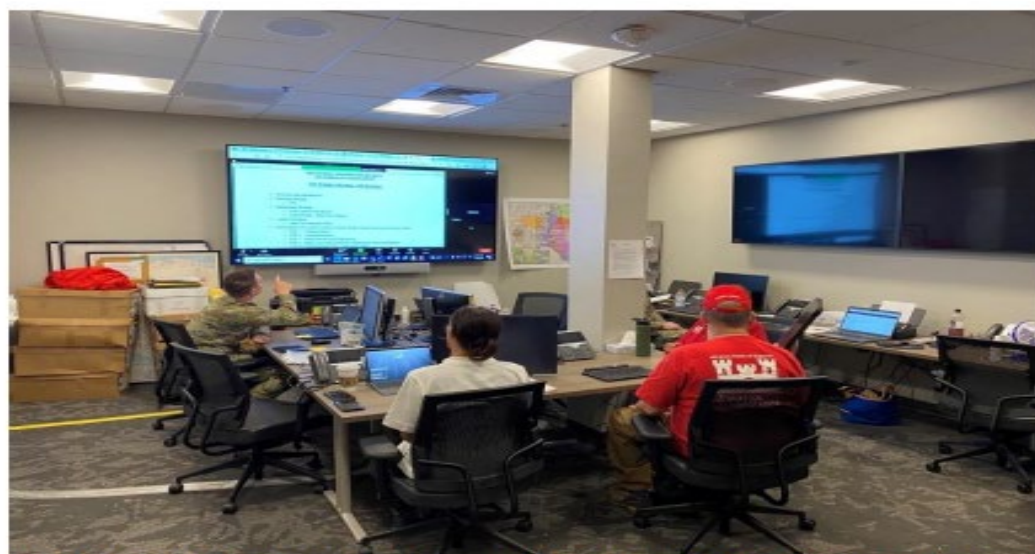
As of 1500PDT 12May22



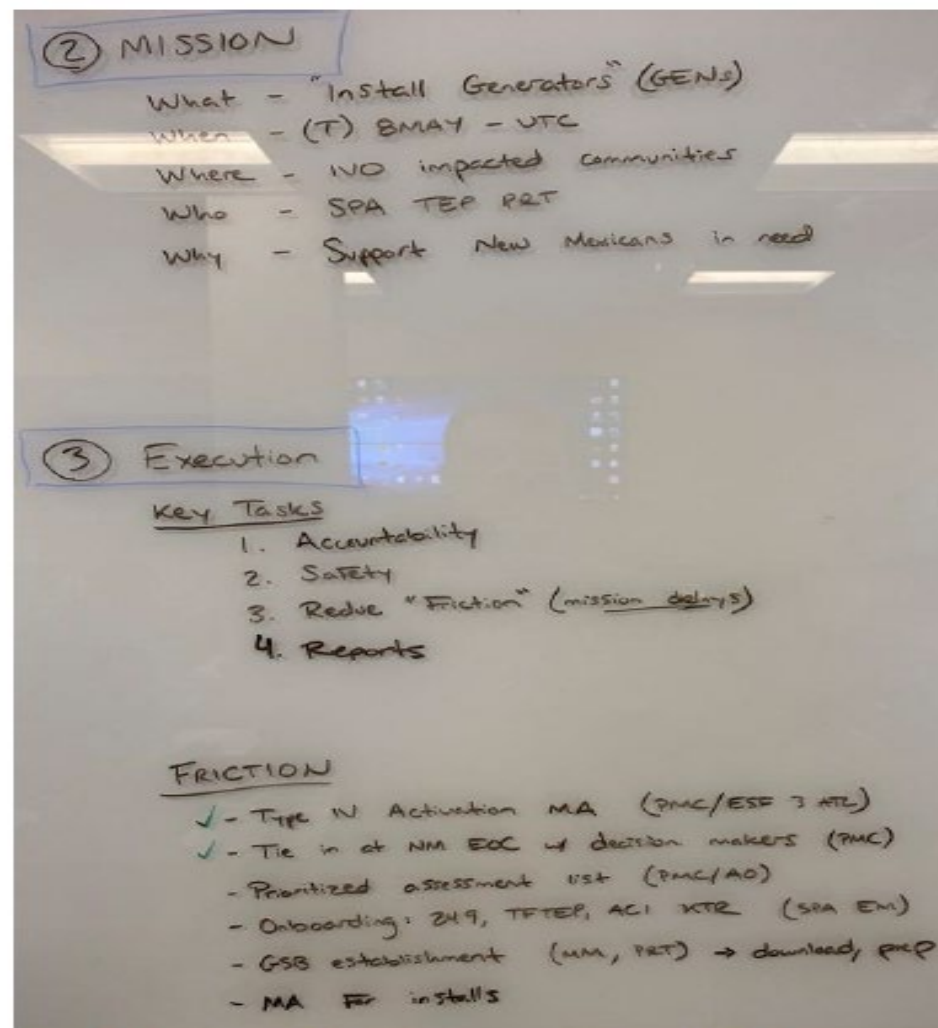
NM WILDFIRES: PHOTOS (THE BEGINNING)



SPA EOC: EM Chief and MLO; PRT OPORD on whiteboard



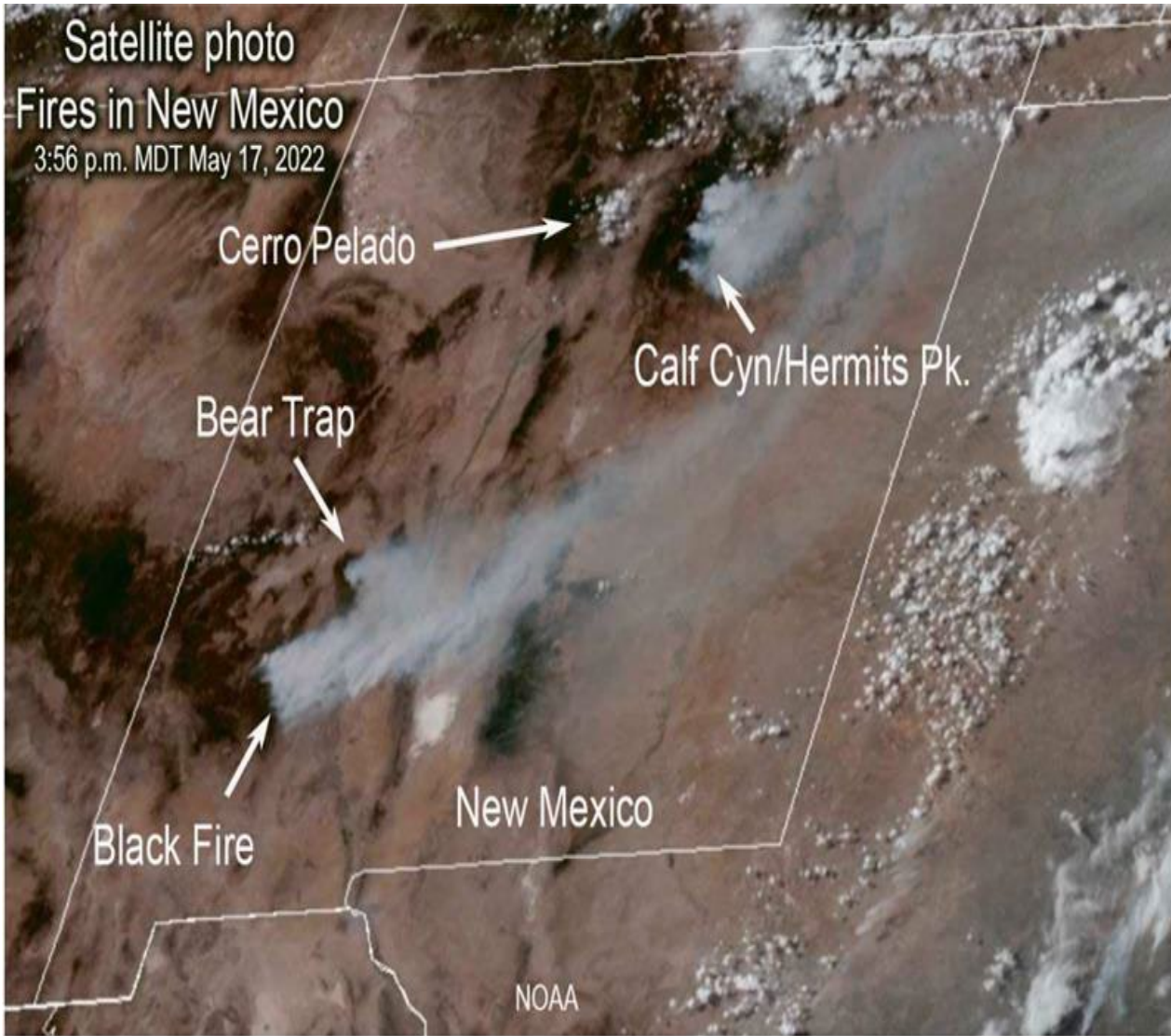
SPA EOC: Dialed into the 1100 NM EOC Wildfire Call



PRT Mission, Key Tasks, and identified Friction



NM WILDFIRES: PHOTOS




Smoke plumes from New Mexico fires at 3:56 p.m. MDT May 17, 2022. NOAA.





NM WILDFIRES: PHOTOS (THE MIDDLE)





 U.S. Army Corps of Engineers, Headquarters is with USACE South Pacific Division. 2d · 🌐

A U.S. Army Corps of Engineers Power Planning and Response Team deployed earlier this week in support of a [FEMA Federal Emergency Management Agency](#) mission assignment in New Mexico in the wake of massive wildfires burning in the northern area of the state.

An Emergency Command and Control Vehicle (ECCV) is positioned in support of our power teams. The ECCV deploys to provide communications and workspace for up to 11 personnel. The ECCV has onboard radio, interagency voice interoperability, satellite and cellular capabilities that can deliver both voice and data communications to the USACE network or beyond. (U.S. Army photo)



  You, Robert Zebrowski and 165 others 1 Comment 11 Shares





NM WILDFIRES: PHOTOS (THE END)





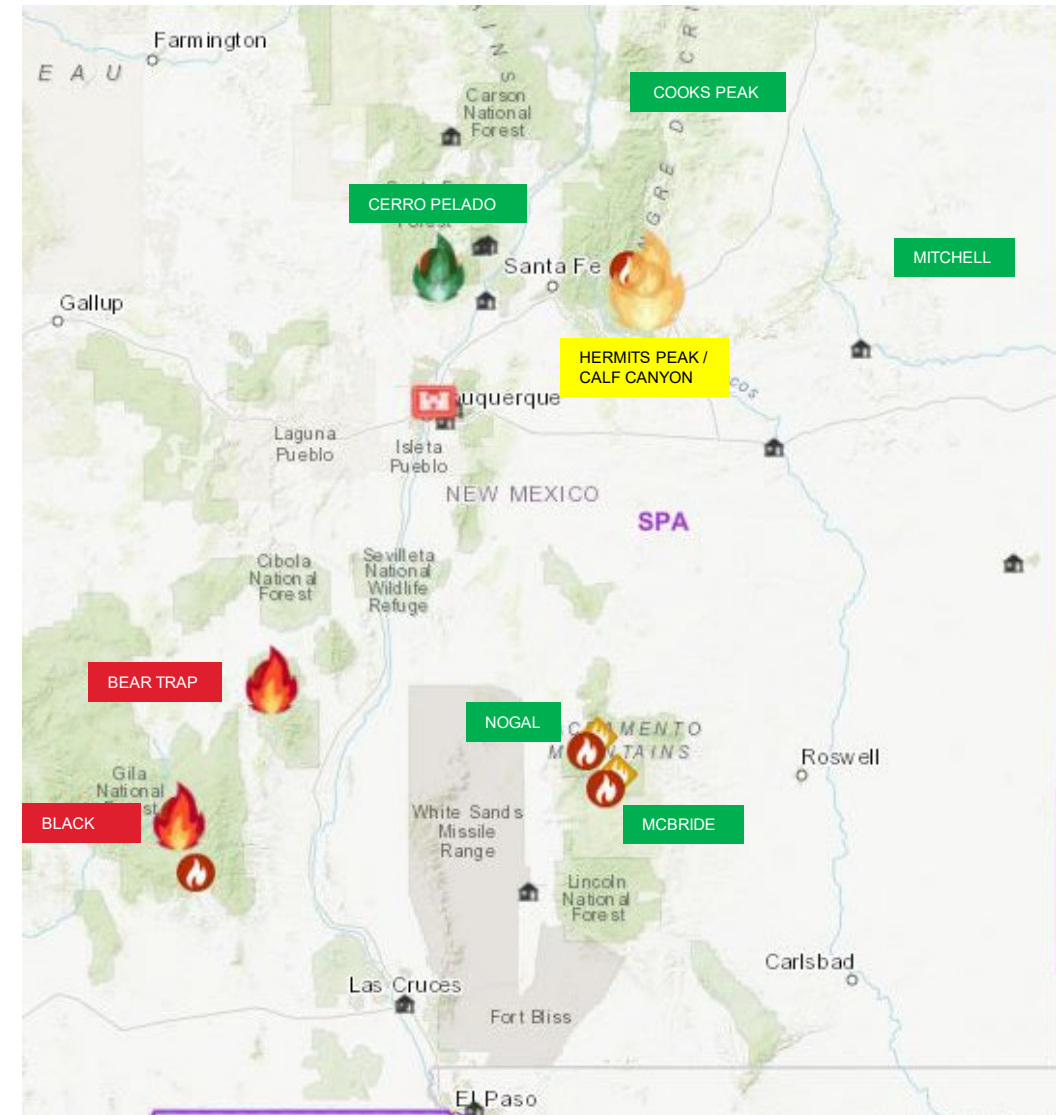
NM WILDFIRE SITUATION 24 MAY 2022

FIRE NAME	START DATE	COUNTY	ACRES	PERCENT CONTAINED (+/- CHANGE SINCE 19 MAY)	STRUCTURES DESTROYED	CRITICAL STRUCTURES THREATENED	DEATHS
BLACK	13-MAY-22	CATRON	160,952	13% (+5)	1		0
BEAR TRAP	01-MAY-22	SOCORRO	26,128	28 (+0)	No data		0
HERMITS PEAK/CALF CANYON	06-APR-22	SAN MIGUEL, MORA	311,250	41(+1)	634		0
CERRO PELADO	22-APR-22	SANDOVAL	45,605	85 (+4)	10	Fire w/in 10 miles of Cochiti Lake Project	0
COOKS PEAK	17-APR-22	MORA, COLFAX	59,359	100	4		0
MCBRIDE	12-APR-22	LINCOLN	6,159	100	200		2
NOGAL	12-APR-22	LINCOLN	412	100	14		0
MITCHELL	22-APR-22	HARDING	25,000	100	0		0

0% - 34% contained
35% - 74% contained
75% - 100% contained

Fire data from Integrated Reporting of Wildland Fire Information (IRWIN) via SPD UCOP

As of 1500PDT 24May22





NM WILDFIRES: SPA TEP PRT OVERVIEW MAP

CAO 24 1900 MAY 22



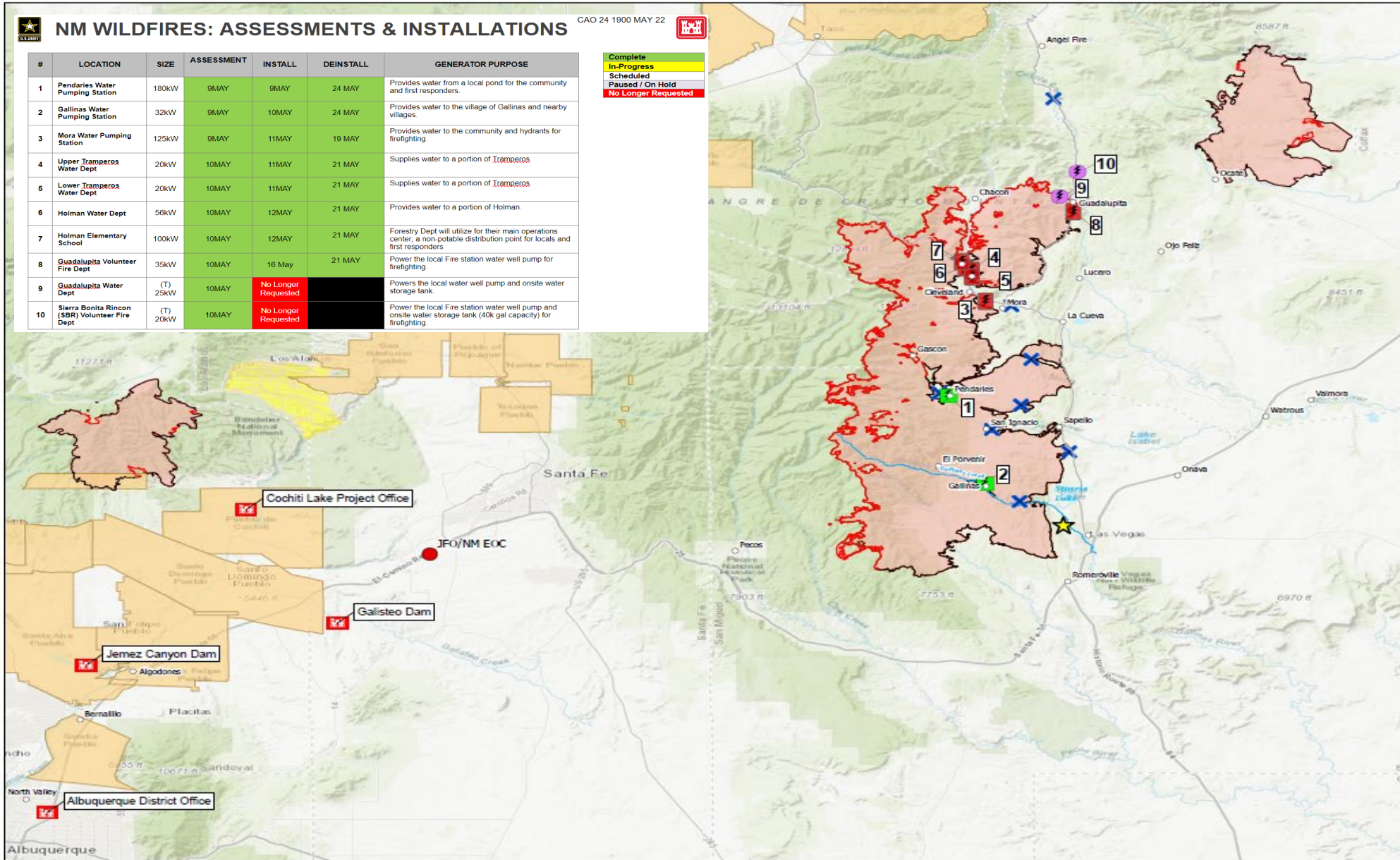
NM WILDFIRES: ASSESSMENTS & INSTALLATIONS

CAO 24 1900 MAY 22

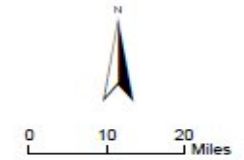


#	LOCATION	SIZE	ASSESSMENT	INSTALL	DEINSTALL	GENERATOR PURPOSE
1	Pendaries Water Pumping Station	180KW	9MAY	9MAY	24 MAY	Provides water from a local pond for the community and first responders.
2	Gallinas Water Pumping Station	32KW	9MAY	10MAY	24 MAY	Provides water to the village of Gallinas and nearby villages.
3	Mora Water Pumping Station	125KW	9MAY	11MAY	19 MAY	Provides water to the community and hydrants for firefighting.
4	Upper Tramperos Water Dept	20KW	10MAY	11MAY	21 MAY	Supplies water to a portion of Tramperos.
5	Lower Tramperos Water Dept	20KW	10MAY	11MAY	21 MAY	Supplies water to a portion of Tramperos.
6	Holman Water Dept	56KW	10MAY	12MAY	21 MAY	Provides water to a portion of Holman.
7	Holman Elementary School	100KW	10MAY	12MAY	21 MAY	Forestry Dept will utilize for their main operations center, a non-potable distribution point for locals and first responders
8	Guadalupita Volunteer Fire Dept	35KW	10MAY	16 MAY	21 MAY	Power the local Fire station water well pump for firefighting.
9	Guadalupita Water Dept	(T) 25KW	10MAY	No Longer Requested		Powers the local water well pump and onsite water storage tank.
10	Sierra Bonita Rincon (SBR) Volunteer Fire Dept	(T) 20KW	10MAY	No Longer Requested		Power the local Fire station water well pump and onsite water storage tank (40k gal capacity) for firefighting.

- Complete
- In-Progress
- Scheduled
- Paused / On Hold
- No Longer Requested



- JFO/NM EOC
 - ★ Incident Command Center
 - ✕ Road Closures
 - 🏠 SPA Office
 - ▭ Fire Perimeter (5-22-2022)
 - ▭ Fire Perimeter (5-23-2022)
 - ▭ Tribal Lands
 - ▭ Los Alamos National Laboratory
- Generator Location Status
- ⚡ Assessed
 - 🟢 Installed
 - 🔴 Deinstalled
- Containment Boundary Status (5-23-2022)
- Contained
 - Uncontained



HERMITS PEAK FIRE LOCATION MAP

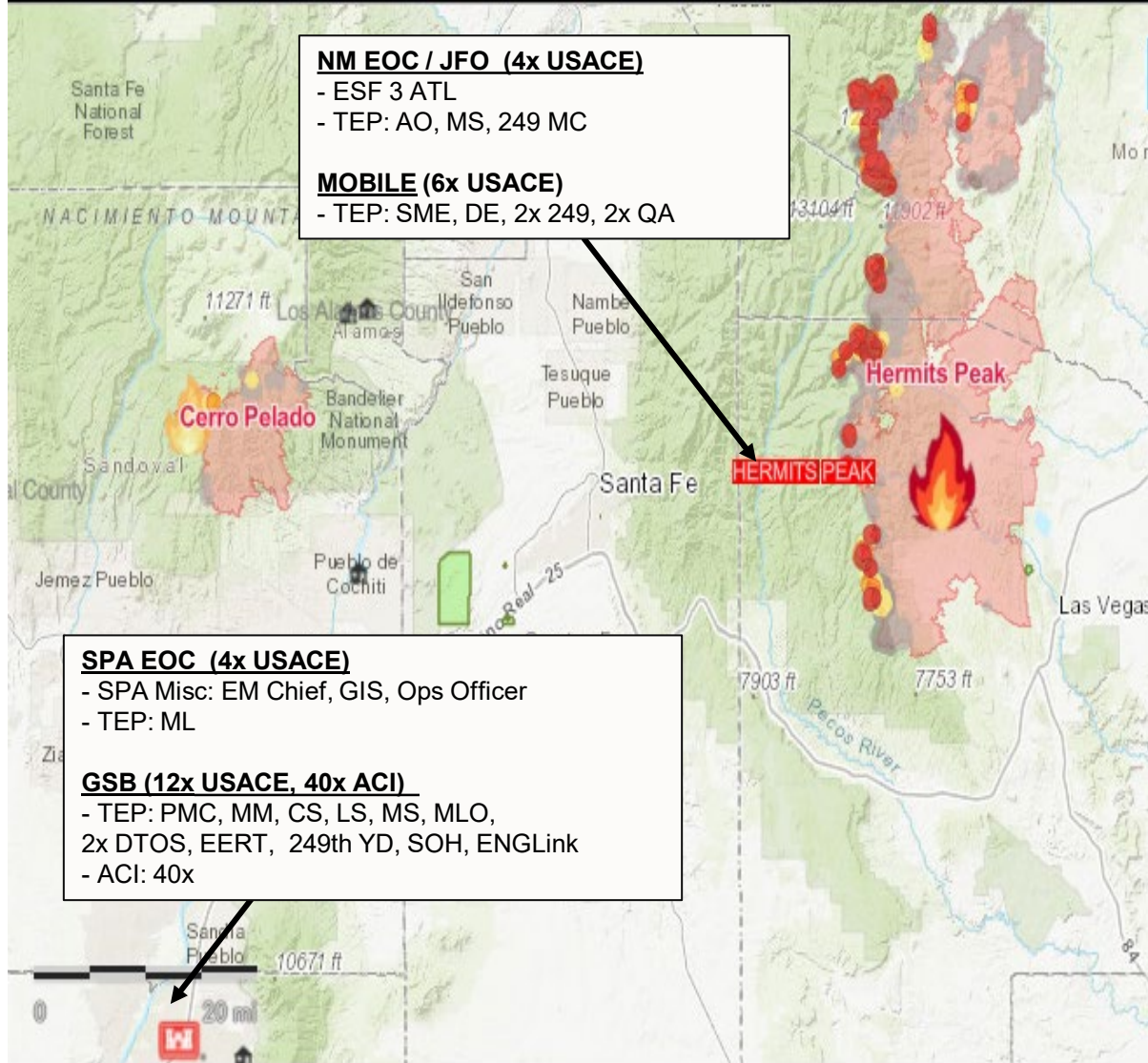


U.S. ARMY CORPS OF ENGINEERS ALBUQUERQUE DISTRICT



NM WILDFIRES: SPA TEP PRT COP

CAO 24 1900 MAY 22



NM EOC / JFO (4x USACE)
 - ESF 3 ATL
 - TEP: AO, MS, 249 MC

MOBILE (6x USACE)
 - TEP: SME, DE, 2x 249, 2x QA

SPA EOC (4x USACE)
 - SPA Misc: EM Chief, GIS, Ops Officer
 - TEP: ML

GSB (12x USACE, 40x ACI)
 - TEP: PMC, MM, CS, LS, MS, MLO,
 2x DTOS, EERT, 249th YD, SOH, ENGLink
 - ACI: 40x

SITUATION UPDATE

- Hermit's Peak: **311.3K** acres (41% contained);
- **The largest NM wildfire on record (as of 16MAY)

LAST 24 (24MAY22)

- Pendaries/Gallinas/DTOS GENs deinstalled
- BOM inventories completed
- demobilization WO cut for 26 May

NEXT 24 (25MAY22)

- Redeploy 249th Soldiers
- BOM recycling
- Return Gen Pack B to Texas
- Send Gen Pack A to ISB

ASSESSMENTS

- 10x complete; 0x pending

INSTALLS

- 8x complete; 0x pending; 0x currently installed
- 28/29 generators available
- *1 requiring higher level repair from FEMA

DEINSTALLS

- 8x completed (plus DTOS gen)

ISSUES / CONCERNS / RFIS

- None

KEY PERSONNEL

- Supported CDR: LTC Patrick Stevens (SPA)
- Power Mission Commander: MAJ Brett Fuller (SPA)
- Mission Manager: Rick Torres (SPA)
- Mission Liaison Officer: CPT Robert Zebrowski (SPA)
- AO: Scott Hamilton (SPA)
- MS: Beverly Dodson (SPA)
- ATL: Jessica Fisher (SPD)
- SPA EM Chief: Crystalin Medrano (SPA)
- ESF3 ATL: Jessica Fischer (SPD)
- COR: Al Coglio (LRP) (RTB 20MAY; virtual)
- CS: MAJ David Terhune (SPA)
- TEP SME: Nancy Church (LRD)
- ACI IC: Hobie Price (WSP, Contractor)
- 249 MC: CW2 Ross (A/249) (RTB 25 MAY)
- 249 YD: SFC Taylor (A/249) (RTB 25 MAY)

ACCOUNTABILITY (66 PAX)

- USACE: 26x
 - SPD: 18 (11x PRT, 1x ATL, SOH, EM Chief, GIS, DE, Ops Officer)
 - LRD: 1x (SME)
 - 249: 4x (RTB 25 MAY)
 - Others: 4x (EERT, 2x DTOS, ENGLink SME)
- ACI: 40x from WSP (partial demob started)

KEY LOCATIONS

- JFO/NM EOC- 13 Bataan Blvd, Santa Fe, NM 87508
- FEMA ISB / GSB- 300 San Pedro Dr NE, Albuquerque, New Mexico, 87108
- SPA EOC- 4101 Jefferson Plaza NE, Albuquerque, NM, 87109

MISSION ASSIGNMENTS (\$5,253,698)

- 01 (FOS) – Regional Activation, \$106,532
- 02 (FOS), Temp Power Mgt, \$0 (closed)
- 03 (FOS), TEP Type 4, \$20,000 (being closed)
- 04 (DFA), TEP Type 4, \$5,147,166

19 MAY, THURS (MA+13)	20 MAY, FRI (MA+14)	21 MAY, SAT (MA+15)	22 MAY, SUN (MA+16)	23 MAY, MON (MA+17)	24 MAY, TUE (MA+18)	25 MAY, WED (MA+19)	26 MAY, THU (MA+20)	27 MAY, FRI (MA+21)
- MG Graham visit - 240 hr service - Deinstall at Mora	- GEN swap at Guad. - Received 5x deinstall task order	- 5x deinstalls - 2x reassessments	- 8x RTS services	- DP for extension - GEN Pack B to ISB	-Deinstall Pendaries, Gallinas, and DTOS gens - Final RTS	- Return GEN Pack A to - 249th fly out - BOM recycling	-Demobilization -GSB hand over - Submit final reports	*Only if extended



NM POST-WILDFIRE FLOOD DIRECT ASSISTANCE REQUEST



Sample temporary measures



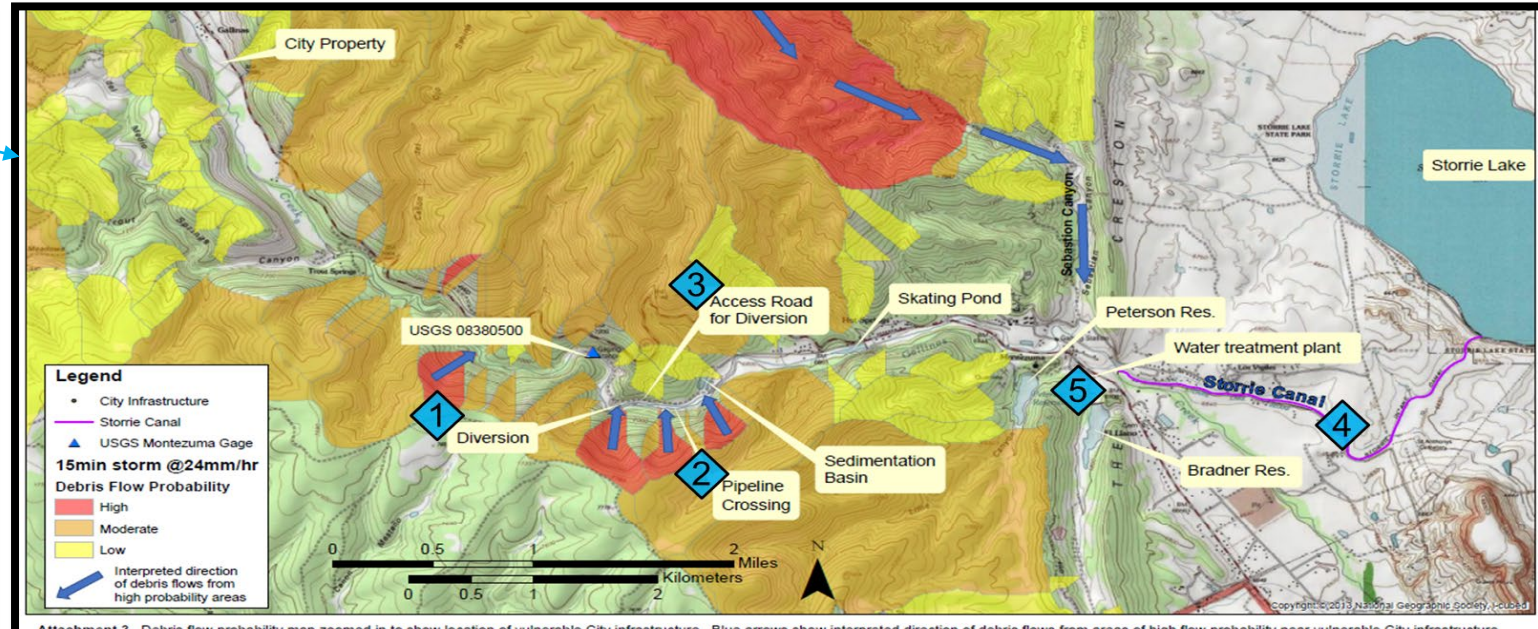
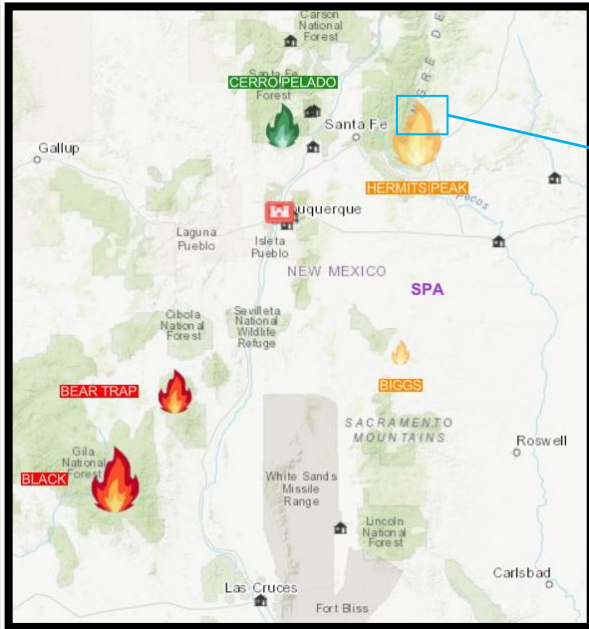
1. Debris flow netting



2. HESCO bastions



3. Cation baskets

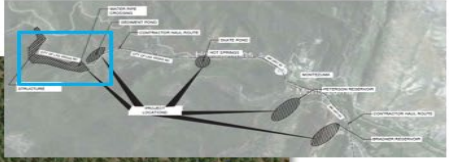
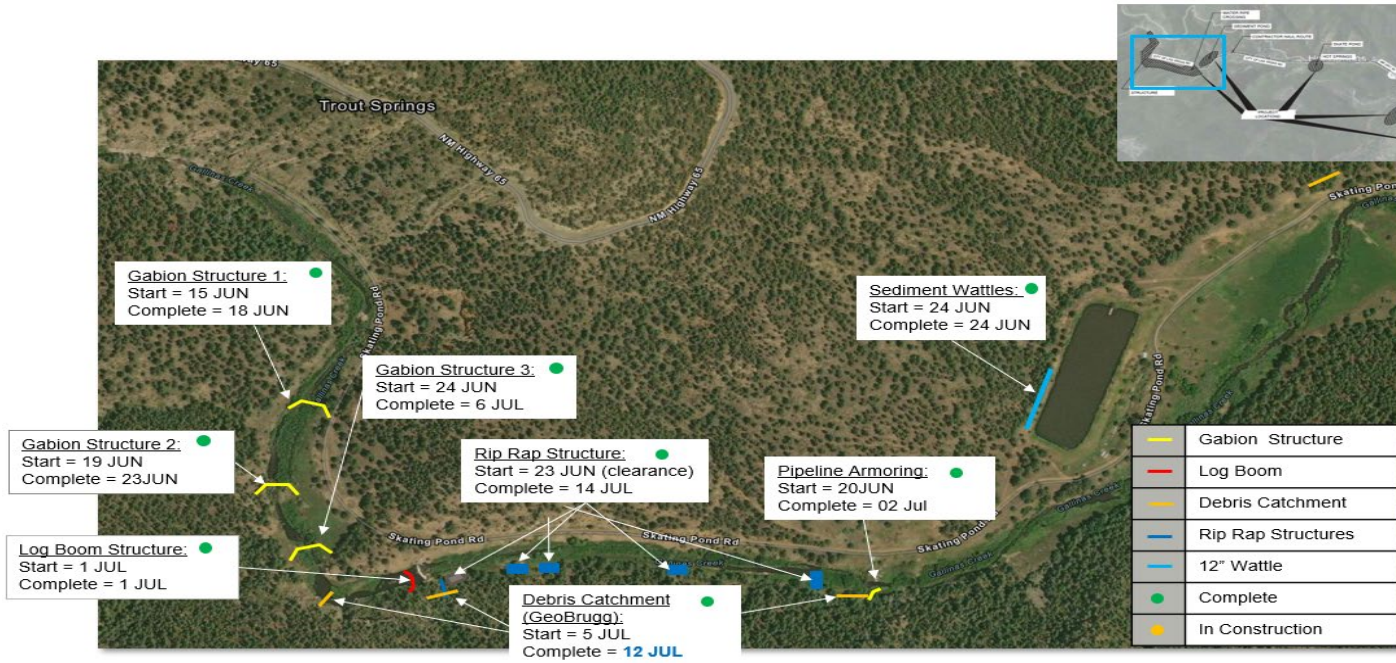


Attachment 3. Debris flow probability map zoomed in to show location of vulnerable City infrastructure. Blue arrows show interpreted direction of debris flows from areas of high flow probability near vulnerable City infrastructure.





NM POST FIRE FLOODING: Direct Assistance



USACE Timeline:

- 28 May- RFA from NM Governor Received
- 31 May- Formal Project Kickoff Meeting
- 02 June- Gallinas Watershed Infrastructure Site Visit
- 04 June- 50% design and cost estimates drafted
- 05 June- Project Information Report (PIR) and Benefit Cost Ratio (BCR) submitted up to HQ USACE for approval and funding. Funding approved same day.
- 10 June- Contract Award and Notice To Proceed
- 15 July- Construction completion





COUNTY: TECHNICAL ASSISTANCE



EFFORT	STATUS
Well House #1 - Approx. 20 HESCOs (NM NG)	Complete
Well House #2 – Approx. 20 HESCOs (NM NG)	Complete
Well House #3 – Approx. 20 HESCOs (NM NG)	Complete
Well House #4 - Approx. 150 Sandbags (NM NG)	Complete
Well House #5 – Approx. 20 HESCOs (NM NG)	Complete
Well House #6 – Approx. 20 HESCOs (NM NG)	Complete
Lagoons and SAS Treatment Facility - Install 200' HESCOs (NM DOT)	Complete
Sleepy Hollow Bridge – Clear/remove vegetation within 100' bridge (NM NG)	Complete
Rio De Las Casas – Install Jersey Barriers (NM DOT/NM NG)	Complete
Ledoux Volunteer Fire Department – Site Visit Complete (NFS)	Complete
Las Vegas WW Lift Station – Approx. 200 HESCOs	Complete
Valencia Bridge (Walking) – Added HESCO cage around pipe	Complete
Independence Bridge – Gabion structure around bridge footing	Complete
Las Vegas Wastewater Treatment Plant – Approx. 50 HESCOs	Complete





QUESTIONS?